

WELCOME TO OUR PLACE!

THE PORT PARHAM AND WEBB BEACH COMMUNITY PLAN

The Parham and Districts Action Group (PADAG) was established as a result of a Community Meeting held in August 2017 to discuss an attempt by the then Department of Environment and Planning to take over Community land leased to the Port Parham Sports and Social Club.

This proposal was seen by the community as a threat to development of facilities to cater for the growing population and visitor activity in the area, and in particular the restoration of the Oval which had fallen into disrepair. The meeting unanimously rejected the proposal and supported the creation of an organisation to continue to promote the interests of the community. This organisation became the Parham and District Action Group.


PADAG was mentored by staff of the Adelaide Plains Council to determine a vision for community development with a view that a clear plan would enable the orderly management of community facilities, and attract funding from various sources towards achieving this.

A Community Meeting was convened by PADAG on 28th April 2019 to invite contributions to a community plan. At this meeting a brainstorming session was held with all suggestions being accepted. A total of 62 initiatives were submitted. Since then there have been additional suggestions. All of these ideas have been included in this plan.

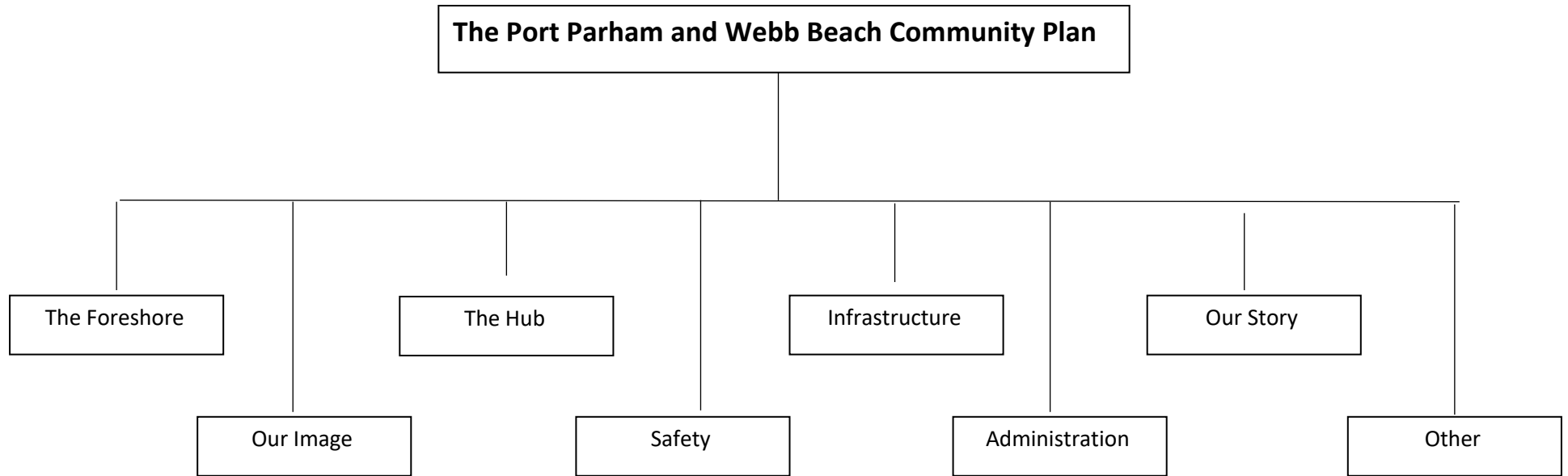
Some of the concepts have already come to fruition and several are in hand. PADAG will continue to promote the concepts and projects as opportunity arises. Colour coding has been applied to show current status of concepts initiated.

This is a living document and will be updated as further contributions from the community are received. Further contributions are always welcome

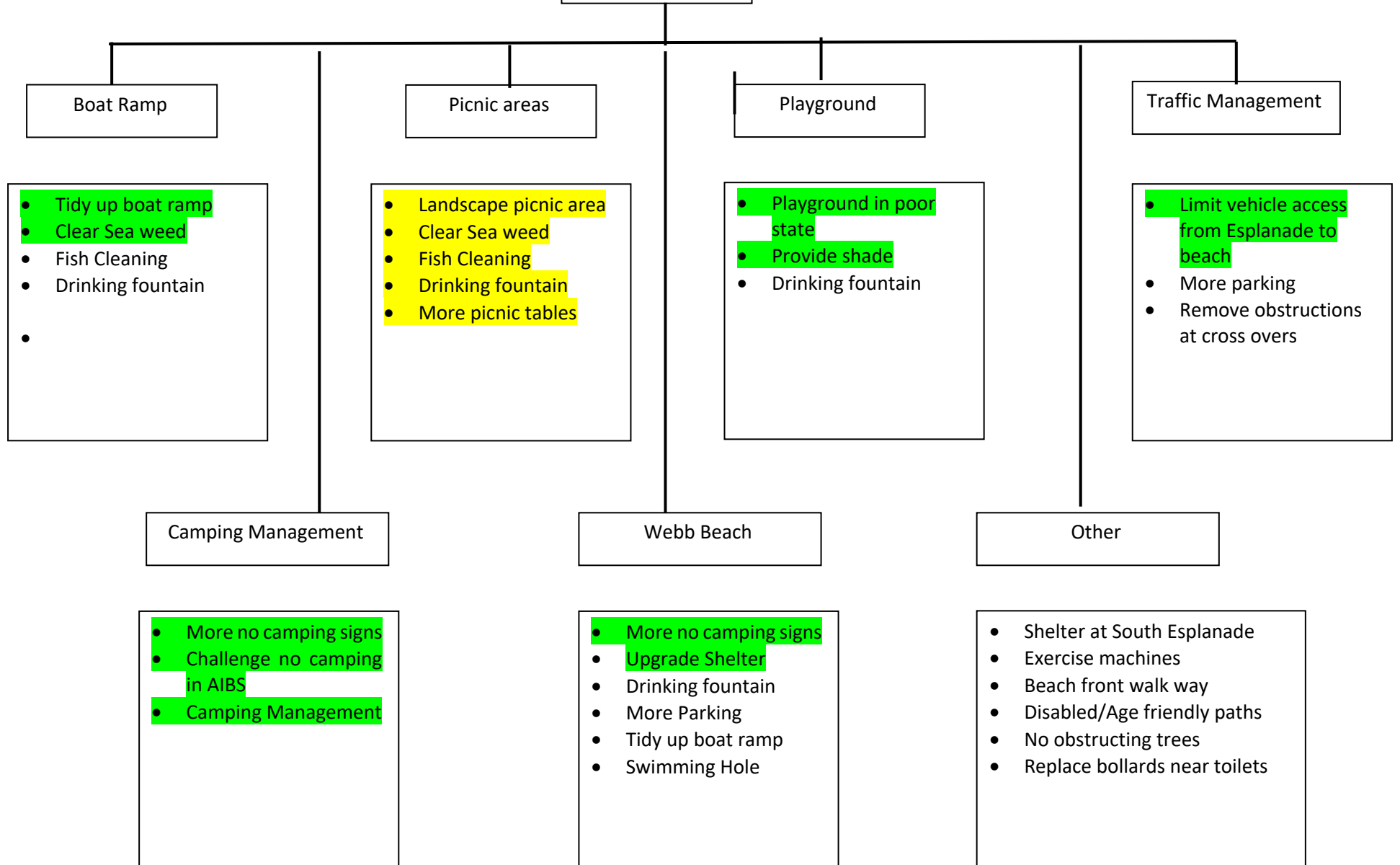
THIS PLAN ISSUED TO THE ADELAIDE PLAINS COUNCIL AND THE PORT PARHAM AND WEBB BEACH COMMUNITIES JANUARY 2021

CODING: Works completed  Proposals in hand  (Updated Oct 2025)

WELCOME TO OUR PLACE!



The Foreshore



Infrastructure

- Water Mains upgrade
- Fire Hydrant provision/Upgrade
- Webb Beach Levee repair/upgrade
- Seal the roads (dust control)
- Fix water flooding Prime St
- Fix water flooding Wasley/Jury St
- Webb Beach Road upgrade

Our Image

- Hard Rubbish pick ups (Skips?) (PtP and WB)
- Advise Community APC contact for dumped rubbish (Crab Chatter)
- Designated site learning destination Childrens Uni
- Inclusion in APC Open Cinema Programme
- Welcome signs
- Emphasise our sunsets
- Rationalise Signage at First St Esplanade T Junction
- Theme poles (pelicans?) for street signs

The Hub

- Re-establish Oval
- Volley Ball Court
- Half Basketball Court
- Skate Park

Our Story

- Interpretive Centre/Jinker Display
- Services Memorial
- Replace Plaque at Webb Beach Car Park
- Upgrade Webb Beach Gazebo
- Create a history interpretation site

Safety

- More speed signs 40 Pt P 30 WB
- Defibrillator accessible to public
- Get all houses numbered with street numbers
- 80 Kph limit from Gooseneck in to towns

Admin

- Establish PAG Group email and exclusive email address
- Establish Coalition of Coastal Towns
- Community Meeting Quarterly
- Seek Grants
- Fund raising

Other

- Horse Management
 - Ban Horses
 - Promote Horses
- Revenue Stream from Camp Ground
- Donation system
- Caretaker at Camp Ground
- Green Waste pick up
- Weekly waste collection
- Restore horse float parking area
- Community Garden on old playground site
- DO NOTHING (I like it like it is!)